

# ISTITUTO MARANGONI — UNIVERSITY PROJECTS

## Raw Richness - S/S 2015

The core of this proposal is born in the wonderful Spain. It illustrates the symbiosis of the garments of different cultures; from the “Siglo de Oro Espanol”, in the late 1400a.c. with queen Isabel the Catholic to the native civilizations that inhabited the New World discovered by Cristopher Columbus. The Mayas, the Azteques and the Incas were in possession of untold wealth but were completely ignorant of their value. This explorative spirit does not end here; traditions, styles and cultural references from India, Africa and Mexico. Simple but original details are found in the colors, textiles and the silhouettes of these civilizations. “Not everything that shines is beautiful”. The style of social groups such as the “Gypsetters” and the “Bloomsburry” are also looked into. People who are in constant search for new oriental and exotic worlds. Artists such as the French Paul Gaugin or the Spanish Mariano Fortuny, writers like Virginia Woolf or characters like Frida Kahlo and Jane Digby; all romantic bohemians who perceive beauty at its highest level.





RAW RICHNESS

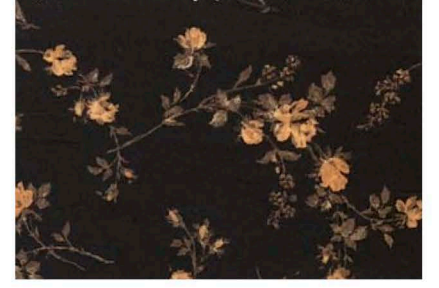




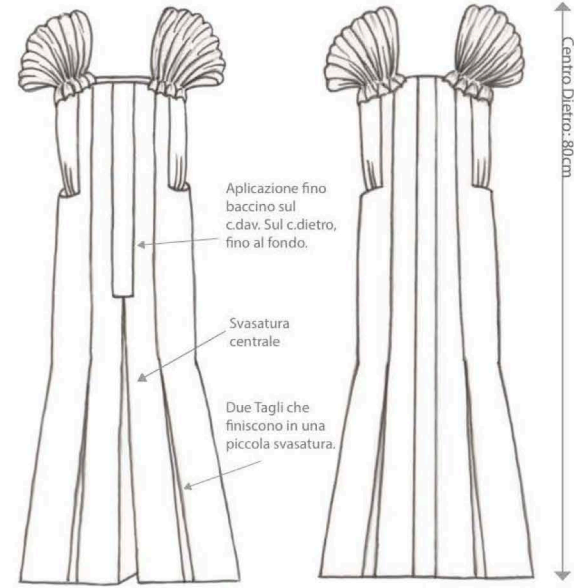
T1



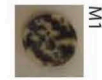
T2



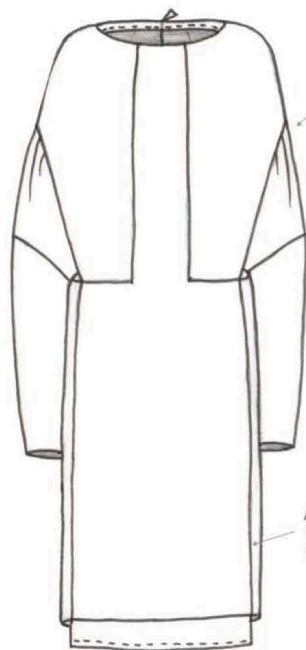
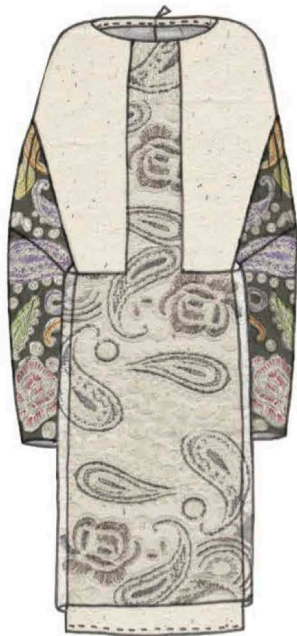
T3



T4



- T 1, T2, T 3, T 4.
- Abito in forma A con una abasatura della vita fino al baccino da dove esce la svasatura.
- Aixelare bassa in forma quadrata.
- Sotto camicia incorporata, in questo caso con una aixelare più alta.
- Chiusura in centro dietro con M1 che sono nascosti sotto T1.

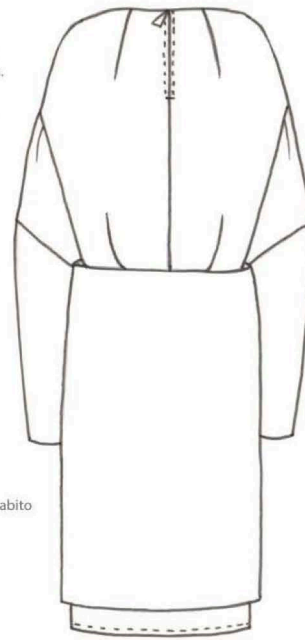


Due Tagli che finiscono in una piccola svasatura.

Seno

Vita

Abito cucuito al soto abito solo sul collo, poi è sciolto.



Centro Dietro: 70cm



M1



-T1, T2, T3, T4.

-Abito con forma rettangolare. Foderato con un sotoabito (T 1) che diventa la camicia di sopra.

-Orlo ripiegato di 2cm nel sotoabito.

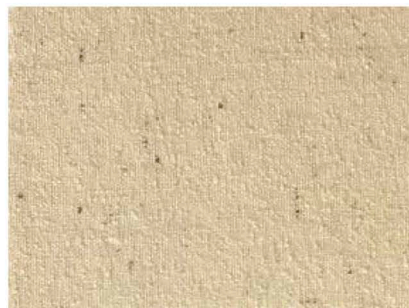
-Orlo al vivo sul abito rettangolare.



Proposta accessorio:



T1



T3

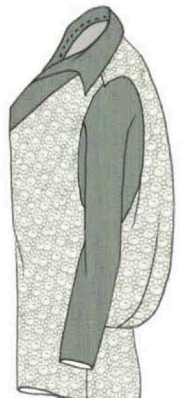


T2



T4





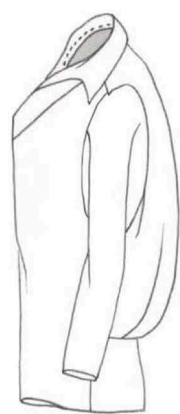
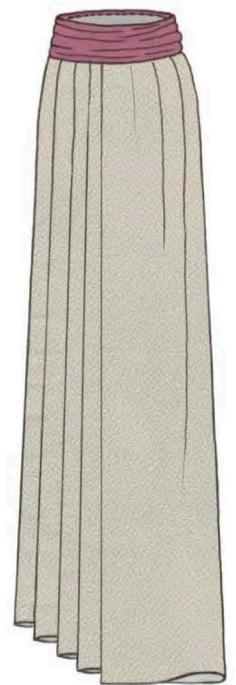
2 spalline che riginano verso il dietro

4 pieghe

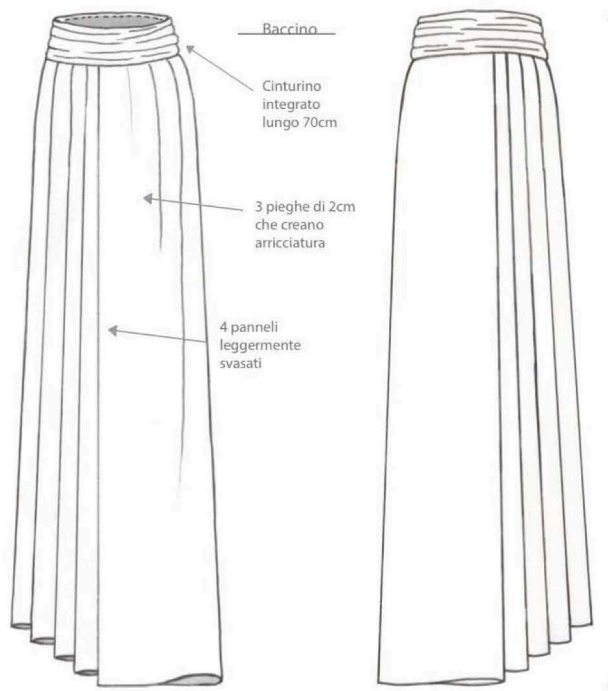


-Camiccia/Giachina.  
-Chiusa a 8cm di il fianco.

↑ Centro Dietro: 60cm



-T 1, T 2  
-Spalline estilo militare girano e diventano la spalla.  
-Spalla crea effetto "bomber".



Baccino

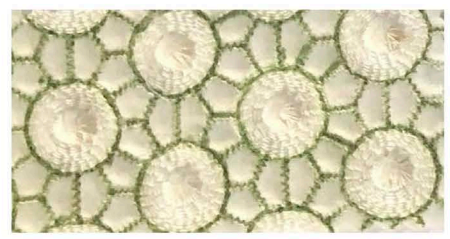
Cinturino integrato lungo 70cm

3 pieghe di 2cm che creano arricciatura

4 pannelli leggermente svasati

↑ Centro Dietro: 60cm

T 1



T 2



-T 3, T 4.  
-Gonna a pannelli irregolare. Pannello centrale di 30cm.  
-Chiusura laterale con zip lungha 15cm sul cinturino.

T 4



T 3





## Transatlantique - S/S 2016

“Transatlantique” is directed to Louis Vuitton fashion brand and pays homage to its history. Retaking and reinterpreting what I considered most interesting about their heritage and at the same time, contemporary for our times.

# TRANSATLANTIQUE



2013 Tutti i diritti di proprietà intellettuale e industriale a tutela di questo documento e degli elementi in esso riprodotti, ivi inclusi tutti i segni distintivi, sono di titolarità esclusiva per l'Italia e per l'estero di Istitutomarangoni, con sede in Milano (Italia), in forza delle leggi e delle convenzioni internazionali in materia di diritto d'autore, disegni e modelli e marchi.

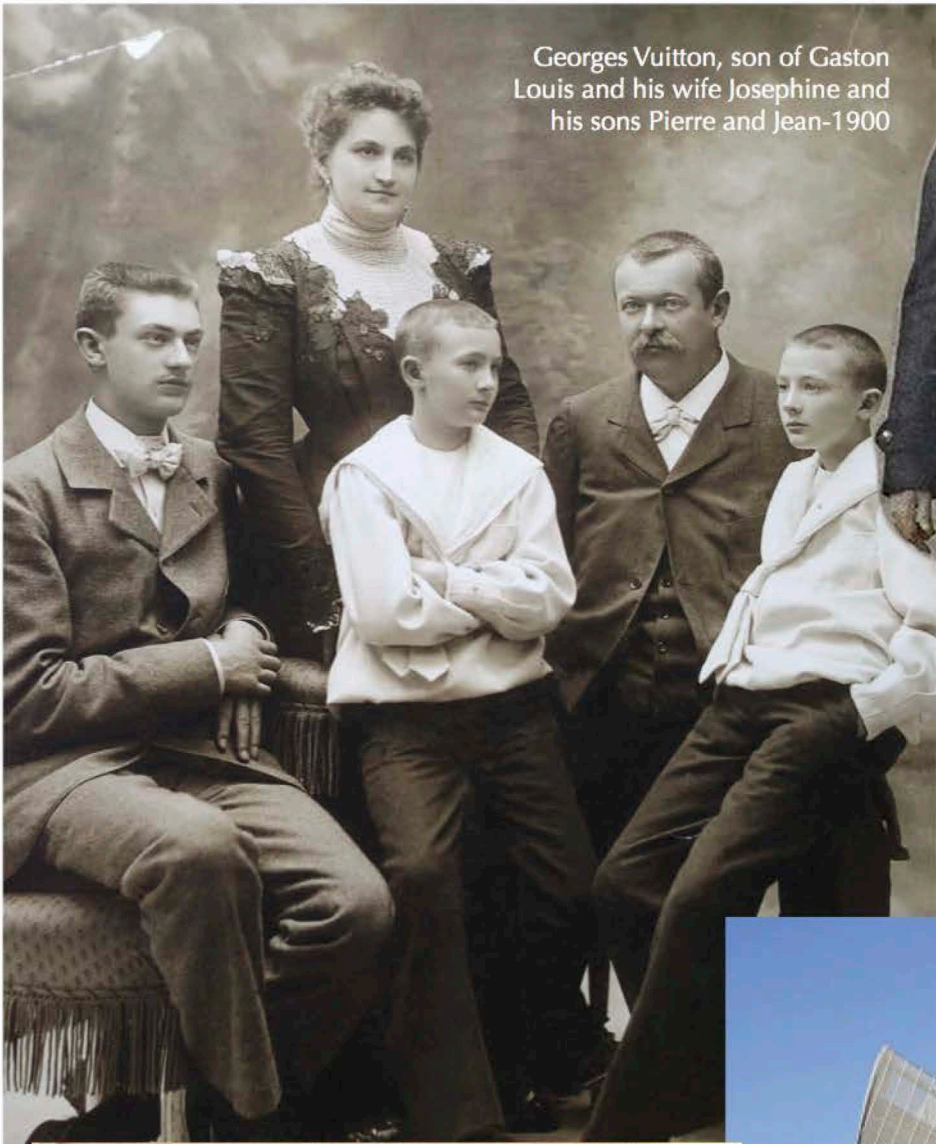
# TRANSATLANTIQUE

Collezione Donna  
Primavera/Estate 16  
Jimena de Cruylles





HM



Georges Vuitton, son of Gaston Louis and his wife Josephine and his sons Pierre and Jean-1900



NAVY



Fondazione LV,  
Frank Gehry,  
Paris



**René Herbst**  
Pioneer of Modernism

Flammarion